

MAYARO / RIO CLARO
REGIONAL CORPORATION
DISASTER MANGEMENT UNIT



EMERGENCY OPERATION PLAN
2017 - 2018

TABLE OF CONTENTS

FOREWORD	3
INTRODUCTION	4
LEAD AGENCY	5
DECLARATION OF EMERGENCY	6
TERMINATION OF THE EMERGENCY	7
GENERAL DESCRIPTION OF AREA	9
TYPES OF DISASTERS ANTICIPATED	12
CATEGORIES OF HURRICANES	13
STAGES OF COMPREHENSIVE EMERGENCY MANAGEMENT	14
ORGANIZATIONS AND ASSIGNMENT OF RESPONSIBILITIES	15
SHELTERS	19
CONTACT LISTINGS	20

FOREWORD

Our world is now more vulnerable to hazards than ever before. The number of lives lost in disasters each year is drastically raising and the economic cost of these disasters is increasing even faster. Natural disasters, as we know it, are not so natural anymore. The main causes of these disasters are human activities across the world. Human activities are changing the natural balance of the earth and are now interfering with the atmosphere, the oceans' polar ice caps, etc. This is mainly due to the increase in global warming which is a major result of human activities. The amount of damage caused by a disaster can be reduced by the use of new technologies. These technological advances are seldom used to help the poorest and the most vulnerable, which make up the majority of the world's disaster victims. In the island of Trinidad and Tobago there are emergency operation disaster units in all districts of the island in the case of any disasters. The Disaster Management Unit Co-ordinator of each corporation, in this case Mayaro Rio Claro Regional Corporation liaises with the Office of Disaster Preparedness and Management and advises the CEO, of the same corporation in the event of an emergency in order for the emergency operations center to be activated.

INTRODUCTION

The chief objective of this contingency plan is to create a system with logical step by step procedures capable of withstanding all types of emergencies whenever they occur.

Directly upon its establishment, this plan will seek to limit or decrease the hazards to environmental health in affected areas once disaster has actually struck.

In the event that a disaster has actually struck it is imperative to effectively manage environmental health both during and after its occurrence. This therefore requires that the state exercise preparedness before such an event actually occurs.

With all of this in mind, it's a fact that during an emergency, safety and success largely depends on displaying good, rapid judgment about appropriate response measures.

In response to this imperative need, this document will seek to put guidelines in place for persons who may be called upon to make decisions after any disaster occurs.

It is duly acknowledged that each disaster is unique; hence this plan would be made flexible to suit the needs and requirements as they arise.

LEAD AGENCY

Like all other things, a plan needs to be overseen or controlled by a certain body or bodies. In this case it is known as LEAD AGENCY. This Agency includes Fire Services, Police, etc. who, in the event of an emergency will be in overall command.

Site control will be established by the lead agency at the emergency site.

EMERGENCY OPERATION CENTRE

The Emergency Operation Centre is based at the Corporation's Building and in the event of an emergency; all Radio Communication from field station must be directed to the Emergency Operation Centre.

IMPLEMENTATION OF ACTION PLAN

The emergency action plan would be put into effect as soon as an emergency occurs or is expected to occur.

Office of Disaster Preparedness Management's Director who receives the initial warnings is responsible for making this decision. Upon notification the Corporation's Disaster Management Co-ordinator will then inform the Chairman/Chief Executive Officer of the Corporation who will declare an Emergency.

All Sub-Coordinators will then be contacted by the Corporation's Disaster Management Co-ordinator as may be needed requesting activation of the Emergency Operations Plan at the Emergency Operations Centre.

The Emergency Operation Centre will be based at the Regional Corporation's Hall/or alternate site. They will co-ordinate with the Site Control by means of C.B. Radio (Field Station), V.H.F. Radio, Trunkino Radio, Landlines, /Cellular Phones and any other means of communication to **Office of Disaster Preparedness Management**.

DECLARATION OF EMERGENCY

The existence of an Emergency Disaster Management Co-ordinator in the region of Rio Claro or in any part thereof may be declared by the Emergency Operating Centre. He may take action and give relevant orders as he considered necessary and are not contrary to Law to implement the Emergency Plan of the region of Mayaro/Rio Claro, and to protect property and the health, safety and welfare of the citizens of the emergency area.

In the event of such a declaration, any of the following actions may take place:

1. Evacuation of building within the “Disaster Area” which is considered to be dangerous or in which the occupants are known to be in danger.
2. Provision of temporary shelters if necessary
3. The calling out and employment of any Corporation’s Personnel and Equipment including subject to approval.
4. Request for the help of such volunteer organizations, personnel and equipment not normally under control of the Corporation as considered.
5. Provision of an Information Centre for the issue of accurate news releases to the media authoritative instructions to the general public.
6. Provision of a Registration and Inquiry Centre to handle individual request for information concerning all aspects of emergency.
7. Ensure casualties are transported safely to the hospital through the Ambulance Service.

TERMINATION OF THE EMERGENCY

When advised by the Office of Disaster, Preparedness and Management through the Emergency Operations Committee, the disaster management co-ordinator would declare that an emergency has been terminated.

The Disaster Unit will ensure that all personnel and agencies concerned are advised.

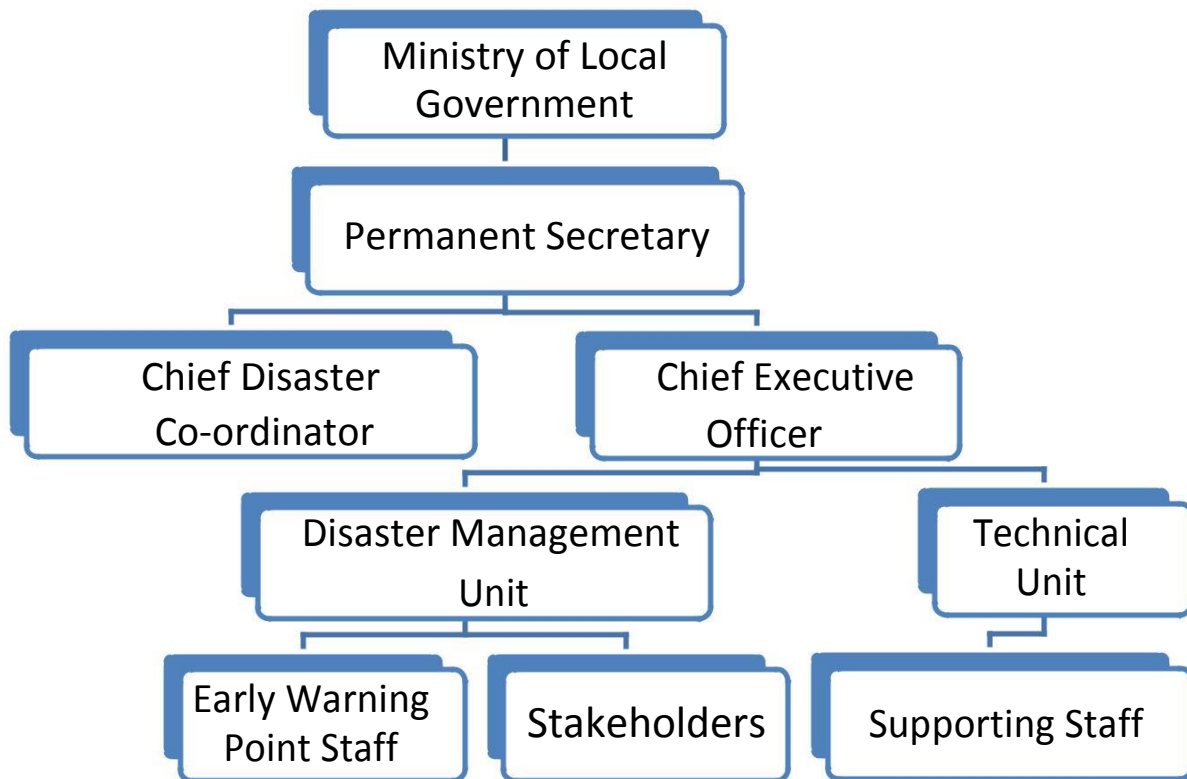


Figure 1: National Emergency Management Structure

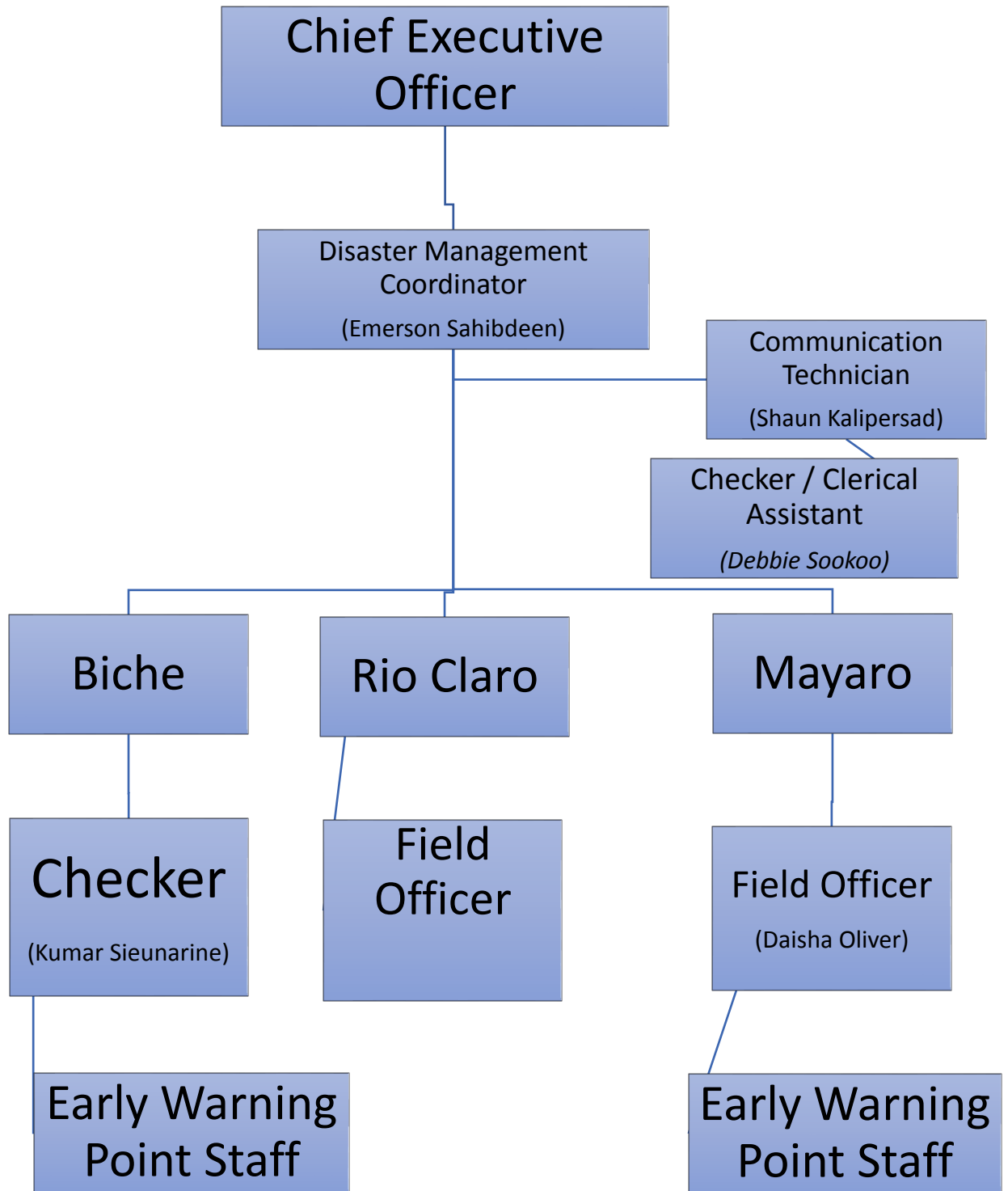


Figure 2: Mayaro/Rio Claro Regional Corporation Disaster Management Unit

GENERAL DESCRIPTION OF AREA

Mayaro /Rio Claro is located in the South East locality of Trinidad. The region comprises of:

NORTH

From the point where the Guaico -Tamana Road meets Edwards Trace proceeding along an imaginary straight line passing across the Central Range Reserve to the point where north bank of the Poole River crosses the eastern boundary of the Central Range Reserve, hence in a generally eastern direction along the bank of the Poole River to the point where it crosses Plum Mitan Road; thence proceeding eastwards along an imaginary straight line passing across the Nariva Swamp to the point on the sea coast at the north bank of Dubloon River at its mouth.

EAST

From the last mentioned point proceeding in a generally southerly direction along the sea coast to Galeota Point.

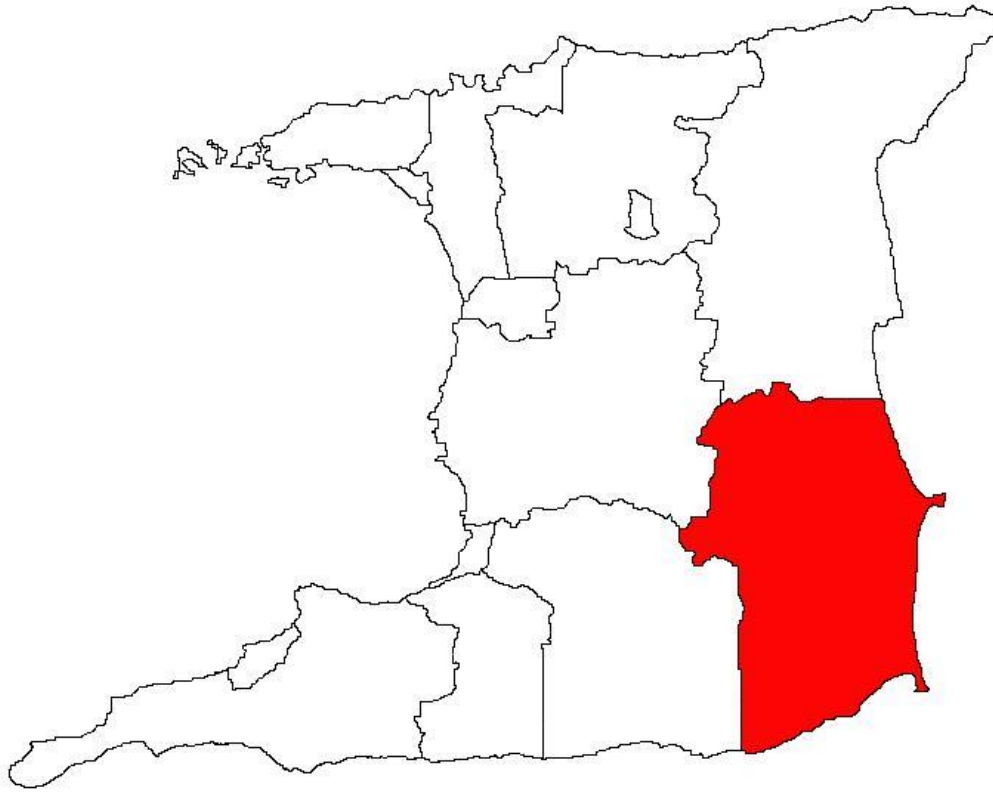
SOUTH

From the last mentioned point proceeding in a generally westerly direction, along the sea coast to a point on the south-western boundary of the Trinity Ward of Canari Point.

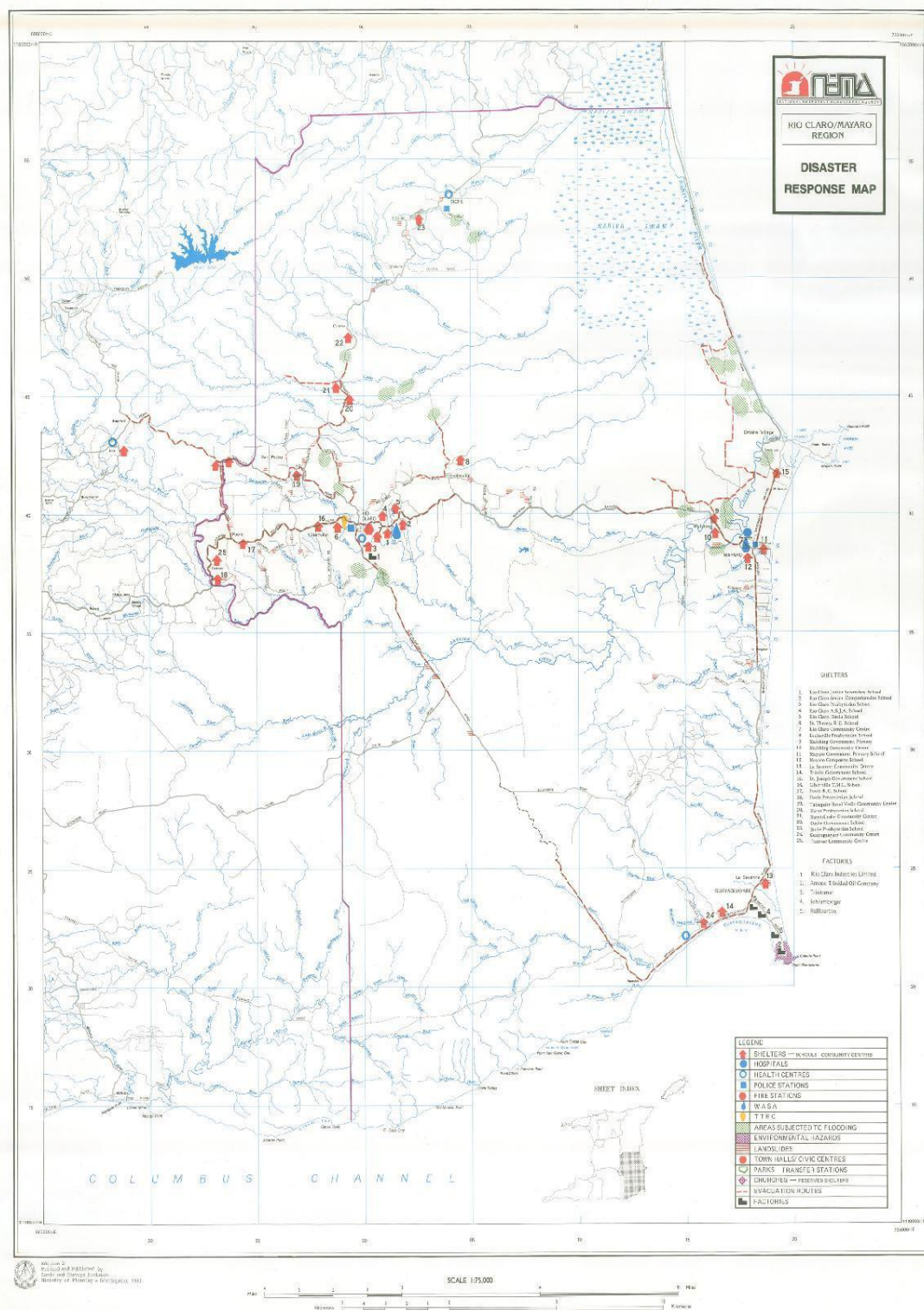
WEST

From the last mentioned point proceeding northwards along the western boundary of the said Ward to the point at its northwestern boundary at the north bank of the Poole River; thence in a generally westerly direction along the north bank of the Poole River to the point it meets the north-western corner of lands of Augustin Valdez; thence proceeding eastwards along the northern boundary of lands of Augustin Valdez and contiguous parcel owned by the said Augustin Valdez to its north eastern boundary where it about San Pedro Trace; thence in a generally north-easterly direction along the said Trace to San Pedro Road; thence northwards along San Pedro to the point where it crosses the Trinidad Government Railway Reserve formerly known as the Rio Claro Line; thence eastward along the said Railway Reserve to the south-eastern corner to lands of Richard O'Connor; thence north-wards along the eastern boundary of the said islands to its north-eastern corner at the Tabaquite-Rio Claro Road; thence north-westwards along the said road to Mahangasingh Trace; thence north-eastwards along the said trace to Mahangasingh Crown Trace to the Killdeer Crown Trace; thence proceeding northwards along an imaginary straight line to and along the eastern boundary of the Central Range Reserve to the Guaico -Tamana Road to the point where it meets Edwards Trace at the point of commencement.

Map1: Spatial Location of Mayaro Rio Claro Regional Corporation in Trinidad and Tobago



Map2: Disaster Response Map for the Mayaro Rio/Claro Regional Corporation



THE TYPES OF DISASTERS ANTICIPATED:

A-NATURAL

- 1) STORMS
- 2) HURRICANES
- 3) SEA SURGES
- 4) LANDSLIDES
- 5) FLOODING
- 6) EARTHQUAKES
- 7) VOLCANOES

B- MAN MADE

- 1) TOXIC SPILLS
- 2) FIRE
- 3) ACCIDENTS (VEHICULAR)
- 4) INDUSTRIAL ACCIDENTS
- 5) EXPLOSIONS
- 6) POLLUTION OF WATER SUPPLY
- 7) FOOD POISONING
- 8) SEWER EXPLOSIONS
- 9) BRIDGE COLLAPSED

ASSUMPTIONS:

This Emergency Operations Plan will describe the systems which are in place for the Region of Rio Claro/Mayaro to transform from a normal to Emergency Status. This will be completed in the shortest possible time as the plan should answer the questions – Who? What? Where? and How? It is in the specific in the authority for an emergency to be declared is designated to the Disaster Management Unit Co-ordinator. The plan is drafted to carry out disaster response and short-term recovery operations utilizing local resources. However, if the magnitude is such that it exceeds available resources, the Chairman of the Office of Disaster and Preparedness Management would assume leadership of the local resources.

The Emergency Operation Committee will be based at the Regional Corporation's Hall – Attentive Site – Co-ordinator, Fire Officer, and City Medical Officer of Health. They will co-ordinate with the site control by means of V.H.F Radio, Landlines, Cellular Phones (C.B. Field Stations) and to Office of Disaster Preparedness and Management by means of Radio Link and any others.

CATEGORIES OF HURRICANES

Hurricanes are ranked into five categories in which category 1 is the mildest and 5 is the strongest. Weather forecast announces the category of a hurricane when there is a hurricane warning making it easier to prepare by referring to the description of each category.

Category 1 – Maximum sustained winds of 74 to 95mph. Barometric pressure in the eye not less than 28.94 inches of mercury, minimum damage to shorelines. No buildings, but trees and shrubs could be uprooted or stripped of leaves. Some flooding e.g., storm surges (rise in sea level) of no more than five feet.

Category 2 – Maximum sustained winds of 96 to 110mph. Barometric pressure in the eye no more than 28.30 inches of mercury. Potential for serious damage to building and flora, roofing and windows could be threatened. Storm surges to eight feet, storm craft in jeopardy.

Category 3 – Maximum sustained winds of 111 to 130mph. Barometric pressure not less than 27.91 inches of mercury, damage likely to building and service. Fallen trees and utility poles could block roads. Storm surges up to 12 feet, with severe coastal flooding and erosion.

Category 4 – Maximum sustained winds of 131 to 135mph. Barometric pressure not less than 27.17 inches of mercury, Heavy damage to structures, agriculture, roads, bridges, roof damage very likely. Storm surges up to 18 feet, major beach erosion and heavy flooding.

Category 5 - Maximum sustained winds higher than 155mph with gust of 200mph and higher with Barometric pressure lower than 27.17 inches of mercury, extreme destruction to structures and all lifeline services. Complete roof failures and heavy damage to smaller buildings, massive flooding, with storm surges up to 25 feet, evacuation necessary from areas on ground below 25 feet above sea level.

STAGES OF COMPREHENSIVE EMERGENCY MANAGEMENT

PREPAREDNESS:

Disaster Preparedness may be described as activities, programs and systems designed to minimize loss of life and damage. Planning, Training and Drill Simulations are the main activities conducted. Preparedness is a readiness to cope with Disaster situations which cannot be avoided. Funds are necessary to be held in reserved for stock piling of provisions, training of relief groups, preparation of operational plans etc.

RESPONSE

Response activities and programs are intended to address the instantaneous effects of the onset of an emergency or disaster and help to reduce fatalities, damage and to speed recovery.

RECOVERY

Recovery activities engaged in restoring systems to normal:

- Short term recovery actions are taken to evaluate damage and return fundamental life support to minimum operation standards.
- Long term recovery action may persist for many years.

ORGANIZATIONS AND ASSIGNMENT OF RESPONSIBILITIES

The majority of the Government Department has systems in place to deal with emergencies in addition to their normal duties, notwithstanding this fact. Listed below are specific responsibilities.

RESPONSIBILITIES

The DISASTER UNIT CO-ORDINATOR will inform the CEO of any major disaster and request from him the necessary vehicles and equipment and whatever other resources which may be available and needed.

CORPORATION CO-ORDINATOR

- I.** Keep financial reports of expenditure during emergencies.
- II.** Should communicate with other Government Organizations to develop and continually up date emergency plans.
- III.** Make certain that systems are in place to act in response to **emergencies.**
- IV.** Ensure that exercise and examination of the emergency systems are conducted on a periodic basis.

PREVENT LOOTING

Ensure safe conduct of emergency vehicles

Help in the evacuation and housing of affected persons

Communicate with Medical Examiner re: dead persons and notify next of kin

Regulate and control vehicular traffic

FIRE

Already established is a plan for firefighting operations.

All ambulances (including Red Cross, St. John's Ambulance etc.) will be under the supervision of the Fire Co-ordinator.

Communicate with Hospital Disaster Co-ordinator re-use of the Hospital or any temporary facility for mass treatment of casualties.

COUNTY MEDICAL OFFICER OF HEALTH (CHMO)

Co-ordinate activities of ambulances re-transportation of injured to hospital.

Communicate with Red Cross, St. John's Ambulances etc. personnel.

Co-ordinator visits of all premises. Take samples if necessary.

Monitor portable water supply.

Communicate with Co-ordinator, Public Works, to monitor prevalence of vectors. Co-ordinate visits to shelters re-environmental sanitation (daily visits)

Liaise with P.I.O re: release to Press on Environmental sanitation procedures.

Evacuate the potential for disease spread; including vector borne diseases.

Mobilize the Public Health team to provide technical assistance in epidemiological surveillance, immunizations (if necessary).

Arrange for laboratory tests to assist in diagnosis and treatment.

Examine all fatalities when notified.

If necessary, establish in an adequate morgue.

Supervise the location and transportation of the remains of the deceased.

Certify the causes of death of the deceased victims and issue death certificates.

Liaise with police to notify next of kin and release the remains and personnel effects to proper representatives.

Liaise with Public Information Officer to issue press releases.

TRANSPORTATION CO-ORDINATOR

Identify routes to be used by emergency vehicles from transfer stations to shelters.

Identify vehicles to be used to evacuate citizens and deliver relief supplies.

Identify from Private and Public resources, list of heavy equipment and personnel to operate equipment.

Obtain written agreements.

EVACUATION

When a major disaster occurs or when information received, that a disaster is imminent, the degree or damage to homes and infrastructure would result with the population being at risk. The parameters would necessitate the part if not all of the effected residents be re-located.

There is need, therefore, to identify and develop-

- Temporary shelters
- Transfer stations

This is very important to the because of three (3) main parameters.

- The magnitude and the factors revolved in mass transportation.
- The transportation system itself may be affected and
- There may be need to move injured persons

In implementing this plan extreme pertinent assumptions must be made with emphasis placed on the local vulnerabilities to disasters

Listed hereunder are guidelines that should be followed.

Residents should be advised to assemble at the designated transfer stations.

A Head Count should be instituted (Name, Age, Sex, etc)

Separation of families should be avoided. Children in particular must be separated from parents. If for some reason family units are disrupted, efforts should be directed at re-uniting the members as soon as possible.

Preserve meaningful group structure. Try to facilitate keeping neighbors of residents from the same community together.

Do not leave frightened or injured persons alone.

In order to avoid confusion and impairment of relief effort, it is imperative that minimal standards or organization and co-ordination be observed at the scene of the disaster.

It is essential to set up a command post to co-ordination emergency resources. These resources must be monitored to avoid conflict.

Displaced persons should be encouraged to first seek accommodation at families and friends.

RESOURCES

1. Mayaro /Rio Claro Regional Corporation
2. Ministry of Works, Rio Claro
3. Fire Services
4. Police

5. U.R.P
6. C.E.P.E.P
7. E.H.S
8. W.A.S.A
9. T&T.E.C
10. R.E.A.C.T
11. Voluntary Agencies

SHELTERS

After the occurrence of a disaster, the public should be made about the location of temporary shelters for displaced persons immediately. The names and titles of the personnel, one should report to must be given so as to improve effectiveness and reduce confusion.

It is very essential to take care to avoid relocating victims once they have taken up about housing at temporary shelters. Where possible victims must be encourage to seek accommodation of relatives or close friends. Victims must be advised to return to their homes at the earliest opportunity and if local resources permit, materials should be provided to repair or rebuild homes. As much as possible the family unit must be maintained and overcrowding should be avoided.

In instances when advance warning has been received that a disaster is likely to occur, an adequate supply of water, food, clothing, etc. should be made available at temporary shelters.

GUIDELINES FOR HOUSING VICTIMS

1. Min. floor 3.5 sq metres per person
2. Privy accommodation should be separate – Male and Female
1 W.C per 15 females. 1 W.C. per 20 males 1 W.C. per 15 children
3. 1 wash hand basin per 20 persons
4. 1 shower per 12 persons
5. Water supply – 50 litres per person per day

BASIC REQUIREMENTS

1. Adequate protection of food supplies against contamination.
2. Protection of individuals against vector borne illnesses.
3. The use of portable generators rather than stand by generators.
4. An adequate supply of fuel for generators (supply for at least five (5) days)

CONTACT LISTINGS

MAIN SHELTERS

- | | | |
|----|-------------------------|----------|
| 1. | Rio Claro College | 644-2219 |
| 2. | Mayaro Composite School | 630-4506 |
| 3. | Mayaro Civic Centre | 630-1933 |
| 4. | Rio Claro High School | 644-2303 |

TEMPORARY SHELTERS - SCHOOLS

RIO CLARO PRESBYTERIAN PRIMARY SCHOOL	644-2342
RIO CLARO ASJA PRIMARY SCHOOL	644-2409
RIO CLARO HINDU PRIMARY SCHOOL	644-2432
ST. THERESA RC PRIMARY SCHOOL	644-2276
ECCLESVILLE PRESBYTERIAN PRIMARY SCHOOL	644-1144
MAFEKING GOVERNMENT PRIMARY SCHOOL	630-7382
MAYARO GOVERNMENT PRIMARY SCHOOL	630-5340
POOLE RC PRIMARY SCHOOL	644-6205
PLUM MITAN PRESBYTERIAN PRIMARY SCHOOL	668-9743
ORTOIRE ST JOSEPH RC PRIMARY SCHOOL	630-4922
CUSHE GOVERNMENT PRIMARY SCHOOL	644- 360
LIBERTVILLE TML PRIMARY SCHOOL	644-3915
GUAYAGUAYARE RC PRIMARY SCHOOL	630-8303
BICHE SECONDARY SCHOOL	
NAVET PRESBYTERIAN SCHOOL	644-1551
BICHE ROMAN CATHOLIC PRIMARY SCHOOL	668-9403
ST.THOMAS MAYARO RC PRIMARY SCHOOL	630-5825

COMMUNITY CENTRES

RIO CLARO	GUAYAGUAYARE	NAVET/ CUSHE
MAFKEING	FONROSE	LA SAVANNE
PLUM MITAN		

HARDWARES MAYARO/ RIO CLARO

B. Ramkissoon & Sons Hardware	644-2436
B. Ramkissoon's Hardware - 2437 High Street, Rio Claro.	644-2229/ 243
Moonan SR & Sons Hardware – Pierreville, Mayaro.	630-4377/ 630-8005
Sugar's Hardware - Pierreville, Mayaro.	630-8152
Ramrattan Hardware –	644-0327
L. Bachoo & Sons -	644-6427/ 6127

SUPERMARKETS IN MAYARO/RIOCLARO

Mohammed Kazim A (Rahim)	644-2349
Naparima Mayaro Road, Rio Claro	
Persad Imports and Exports Limited	644-2566
Tabaquite Road	
Persad Food Store Limited	630-3113
Manzanilla Road, Mayaro	
S & S Persad Supermarket	644-2566
Naparima Mayaro Road, Rio Claro	
V's Supermarket	630-4343
Pierreville Mayaro	
Family Mart	644-2528
Naparima Mayaro Road, Rio Claro	

FUNERAL HOME

David Boodoo's Funeral Home.	644-2073
2551 High Street, Rio Claro.	

HOSPITALS

Mayaro District Hospital	630-1258/ 1259
--------------------------	----------------

HEALTH CENTRES

Guayaguayare Health Centre	630-3093
Nariva/Mayaro Health Centre	644-2320/ 2314
Rio Claro Health Centre	644-2236
Rio Claro Maternity Ward	644-0181

DRUG STORE

Rio Claro Pharmacy.	644-2319
High Street, Rio Claro.	
Plaza Drugs	644-2529
Naparima Mayaro Road.	
TLC Drugs	644-2312
Mayaro Pharmacy	630-4312
Ramkoon Drugs Store	630-3784

FAST FOOD OUTLETS

KFC (Rio Claro)	644-0777
KFC (Mayaro)	630-0777
Royal Castle (Rio Claro)	644-2446
Chinese Dragon Restaurant	644-3192
Flavour King Chinese Restaurant	

RECREATION GROUNDS

Mafeking – Inner Mafeking

Union/ Agostini

Ecclesville, Legendre

Jairam Trace

Cushe/ Navet

Plum Mitan

Biche

Charuma

Cushe

Libertville, Fonrose

Ortoire

La Savanne

Guayaguayare

Double Bridge Ground (Orphan)

Shell

Old Guayaguayare

Dades / Killdeer

Rio Claro

Boos

Mayaro

MAYARO/RIO CLARO REGIONAL CORPORATION**TELEPHONE DIRECTORY-LISTING**

TITLE	NAME	TEL NO:
CHIEF EXECUTIVE OFFICER	ASHMEAD MOHAMMED	644- 2261
ENGINEER AND SURVEY OFFICER	DARYL GIRDHARIE	376-6480
P.M.O.H	KAMALUDDIN AMIN	384-7171
PUBLIC HEALTH INSP III	WILLIAM KITSON	346-1262
SUPERVISOR OF CESSPPITS	KASSIE RAJPAUL	379-5579
WORK SUPERVISOR I	WALT ALI	351-5430
CLERK IV	DHANMATIE LEMET	299-8328
COUNTY SUPERINTENDANT	DIANAND SATNARINE SINGH	376-6482
AO II	ROMA FELMINE	351-5431
AG. ROAD OFFICER II	MOONIDATH RAMSAMOOJ	379-5576
SUPERVISOR (W.S)	ROY RAMNATH	351-5435
TRANSPORT FOREMAN	CHRISTOPHER BENJAMIN	376-3486
POWER SAW OPERATOR	VISHNU RAMKISSON	793-2655

<u>COUNCIL</u>		
GLEN RAM	CHAIRMAN / COUNCILLOR	678-0297
VIDAISH MAHARAJ	VICE CHAIRMAN / COUNCILLOR	360-6388
SHAFFIK MOHAMMED	COUNCILLOR	337-4707
BHUSHAM RAMPERSAD	COUNCILLOR	370-7222
HAZARIE RAMDEEN	COUNCILLOR	682-7376
KYRON JAMES	COUNCILLOR	789-3638
BRINSLEY MAHARAJ	COUNCILLOR	377-7594
RAMKISOON NAGASSAR	ALDERMAN	743-9010
ELITHA BESSOR	ALDERMAN	746-2906
JEWANLAL JANKEE	ALDERMAN	714-1307
TENDERS CLERK	AMELIA KHAN	379-5571
<u>DISASTER MANAGEMENT UNIT</u>		
DISASTER MANAGEMENT COORDINATOR	EMERSON SAHIBDEEN	
DISASTER MANAGEMENT FIELD OFFICER	DAISHA OLIVER	299-8554
DISASTER MANAGEMENT COMMUNICATION TECHNICIAN	SHAUN KALIPERSAD	299-8327

COMMUNITY DISASTER RESPONSE TRAINING TEAM

MAYARO/RIO CLARO REGIONAL CORPORATION

No.	Name	Organization	Contact No.
1	Amanda Bidaisee	Volunteer	737-1617
2	Angela Guerra	Volunteer	719-3223
3	Carmeni Boxer	Radio Emergency Action Community Team (REACT)	337-3617
4	Debbie Sookoo	Mayaro/Rio Claro Regional Corporation	394-6069
5	Deodath Mahabir	Volunteer	357-2310
6	Keevan Harrypersad	Volunteer	351-5601
7	Kimberly Mohammed	Rio Claro Fire Service	786-3529
8	Kumar Sieunarine	Disaster Management Unit	299-8547
9	Latoya Jones	Guayana Red Cross	
10	Max Durity	Prison Officer	709-8638
11	Pearl Riley-Yusif	TTRCS South	717-5010
12	Richard Zamora	TTRCS South	716-4328
13	Ronald Ramsamooj	Volunteer	467-0918
14	Rosalind Persad	Eastern Emergency Response Services Ltd	338-4960
15	Rosanna Singh	Volunteer	467-0420
16	Shane Kallicharan	Volunteer	715-9300
17	Shane R. Pinto	Rio Claro Fire Service	359-2795
18	Shash Maharaj	Mayaro/Rio Claro Regional Corporation	337-6517
19	Shaun Kalipersad	Mayaro/Rio Claro Regional Corporation	299-8327
20	Shawn Gardner	Police Officer	785-9846
21	Sheila Mahabir	Volunteer	349-3771
22	Sophia Sookram	Volunteer	461-8653
23	Temeika Toussaint	Volunteer	378-0739
24	Phillip Ramdass	Volunteer	705-8040

RED CROSS TEAM FIRST AID

MAYARO/RIO CLARO REGIONAL CORPORATION

No.	Name	Organization	Contact No.
1	Amanda Bidaisee	Volunteer	737-1617
2	Angela Guerra	Volunteer	719-3223
3	Carmeni Boxer	Radio Emergency Action Community Team (REACT)	337-3617
4	Debbie Sookoo	Mayaro/Rio Claro Regional Corporation	394-6069
5	Deodath Mahabir	Volunteer	357-2310
6	Keevan Harrypersad	Volunteer	351-5601
7	Dedra Hudes	Volunteer	
8	Emerson Sahibdeen	Disaster Management Unit	299-8548
9	Gerard E. Hudes	Volunteer	760-7513
10	Joan Huggins-Hacket	Volunteer	687-5065
11	Lincoln Latchman	Volunteer	708-5817
12	Mahadeo Ram	Volunteer	644-1055
13	Ronald Ramsamooj	Volunteer	467-0918
14	Melanda Ramoutar	Volunteer	721-0973
15	Rosanna Singh	Volunteer	467-0420
16	Shane Kallicharan	Volunteer	715-9300
17	Shane R. Pinto	Rio Claro Fire Service	359-2795
18	Shash Maharaj	Mayaro/Rio Claro Regional Corporation	337-6517
19	Shaun Kalipersad	Mayaro/Rio Claro Regional Corporation	299-8327
20	Rampersad Motiran	Radio Emergency Action Community Team (REACT)	349-2550
21	Sheila Mahabir	Volunteer	349-3771
22	Rosemarie Ramnarine	Mayaro/Rio Claro Regional Corporation	719-3346
23	Sabita Ramsingh Ball	Mayaro/Rio Claro Regional Corporation	742-6926
24	Phillip Ramdass	Disaster Management Unit	705-8040
25	Sharla King	Trinidad and Tobago Police Service	751-7720
26	Shelia Mahabir	Volunteer	349-3771
27	Surish Ramtahal	Volunteer	360-4479
28	Urica Seepaul Felmine	Mayaro/Rio Claro Regional Corporation	716-3490
29	Verina Ali	Mayaro/Rio Claro Regional Corporation	759-7244

VULNERABILITY CAPACITY ASSESSMENT TEAM

MAYARO/RIO CLARO REGIONAL CORPORATION

No.	Name	Organization	Contact No.
1	Amanda Bidaisee	Volunteer	737-1617
2	Amanda Toussaint	Volunteer	792-5090
3	Carmeni Boxer	Radio Emergency Action Community Team (REACT)	337-3617
4	Debbie Sookoo	Mayaro/Rio Claro Regional Corporation	394-6069
5	Deodath Mahabir	Volunteer	357-2310
6	Keevan Harrypersad	Volunteer	351-5601
7	Amber Davis	Rio Claro Fire Service	792-5090
8	Arjoon Sookraj	Rio Claro Fire Service	492-4278
9	Arnold Greene	Guayaguayare Sports Club	358-6438
10	Arvolon Wilson-Smith	Community Awareness Emergency Response Committee (CAER)	345-6281
11	Augustine Mc Kain	Mayaro Guayaguayare Unemployment Organization for Concern Citizens	360-1088
12	Bertrand Joseph	Contractor	494-3703
13	Ronald Ramsamooj	Volunteer	467-0918
14	Leslie Edgehill	Guaya Red Cross	
15	Rosanna Singh	Volunteer	467-0420
16	Shane Kalicharan	Volunteer	715-9300
17	Shane R. Pinto	Rio Claro Fire Service	359-2795
18	Shash Maharaj	Mayaro/Rio Claro Regional Corporation	337-6517
19	Shaun Kalipersad	Mayaro/Rio Claro Regional Corporation	299-8327
20	Gillian Cooper	Guayaguayare Sports Club	752-7498
21	Sheila Mahabir	Volunteer	349-3771
22	Jeneille Calender	Net Workers for Socio Economics Empowerment for Guaymay	320-1491
23	Joan S. Rigues Dyer	South East Maintenance Service Ltd	368-7706
24	Kimberly Mohammed	Rio Claro Fire Service	786-3529
25	Sharla King	Trinidad and Tobago Police Service	751-7720
26	Sophia Sookram	Volunteer	461-8653
27	Lewis Rigues	Rig Blast & Group of Trinidad and Tobago	397-9290
28	Marvin Edwards	Fire Service	797-4805
29	Nydia Ferrier	Community Member	325-6158
30	Rosalind Persad	Eastern Emergency Response Services Ltd	338-4960
31	Temeika Toussaint	Volunteer	378-0739
32	Wendy Jemmott	Volunteer	756-2692/644-2165

MINISTRY OF COMMUNITY DEVELOPMENT, CULTURE AND GENDER AFFAIRS
COMMUNITY DEVELOPMENT DIVISION
COUNTY – NARIVA/MAYARO

ELECTION RETURN – VILLAGE/COMMUNITY COUNCIL

No.	Name of Council	Name/Address & Telephone Contact President	Name/Address & Telephone Contact Secretary
1.	Navet	Mr. Mathias Quamina 3 Location Trace Navet Village 765-0142	Ms Sursati Abdool Navet Village Rio Claro 644-1566
2.	Libertville	Mr Lennard Phillip Old Mayaro Road Libertville 644-2061/744-7343	Mr Dave Sennon Naparima Mayaro Road Libertville 791-8539
3.	Dades Road	Ms Hillaire Housend Issac Dades Road Rio Claro 644-1094	Ms Afi Yearwood 701 Tabaquite Road Rio Claro 644-1801

4.	Biche	Ms Sharon Billy Sooknanan Street Biche 367-8758	Ms Codette Quashie Rodney Street Biche 487-7531
5.	Charuma	Mr. Vernon Rodriguez Charuma Village 668-9993/495-8719	Ms Sandra Bedeasie Charuma Village 782-0533
6.	Ecclesville	Mr Fazimool Ali 438 Rio Claro Mayaro Road Ecclesville, Rio Claro 644-0125/380-3023	Ms Sita Mohan 438 Rio Claro Mayaro Road Ecclesville, Rio Claro 644-0125/380-3023
7.	Boos	Ms Bissondai Herman Grant Street Rio Claro 773-6721	Ms Judy Kennedy Boos Village 350-2815
8.	Brother's Road	Mr Peter John 73 Pascal Trace Brother's Road	Ms Maria Santana Pascal Trace Brother's Road

		341-1864	656-2145/398-0691
No.	Name of Council	Name/Address & Telephone Contact President	Name/Address & Telephone Contact Secretary
9.	Hamilton	Ms Vena Sookoo Navet Village 644-1558/740-5453	Ms Annesa Baksh Hamilton Village 738-8014/797-9954
10.	Fonrose	Mr Seelal Mathura 1655 Fonrose Village Poole 352-8130	Ms Geeta Humphrey Fonrose Village Poole Valley, Fonrose 482-7741
11.	Cushe	Mr Jason Verrieul Cushe Village Rio Claro 644-3713	Ms Gracie Bedase Cushe Village Rio Claro 313-8826/644-0814
12.	Ortoire	Mr. Steve Bayn Ortoire Village 331-8872	Ms Nelsia Abraham Ortoire Village 388-8574

13.	Bristol	Mr. Ganesh Baksh Union Food Crop Road Bristol Village 630-7438/383-5531	Ms Jamilla Shaddy-Rahim 3592 Naparima Mayaro Road Bristol Village 630-3411
14.	La Brea	Ms Joan Rigues La Brea Village Guayaguayare 630-4158/630-5278	Ms Carleen Dyer (Assistant Secretary) La Brea Village Guayaguayare 681-1231/733-1449
15.	La Savanne	Mr Irbid Smith La Savanne Village 630-9892 382-7048	Ms Zola Smith La Savanne Village 303-4492
16.	Cascadoux/ Kernaham	Ms Kim Charles Cascadoux Trace Manzanilla Road Mayaro 353-7411	Ms Monica Thomas Cascadoux Trace Manzanilla Road Mayaro
17.	Bucket Corner	Mr Richard Roberts Guanapo Estate, Rio Claro 778-1671	Ms Mauressa Ali Bucket Corner Rio Claro

			644-0476
No.	Name of Council	Name/Address & Telephone Contact President	Name/Address & Telephone Contact Secretary
18.	Rio Claro	Mr. Rayber Bowen 115 Guayaguayare Road Rio Claro 748-3312	Ms Ann-Marie Byneal Enid Village Rio Claro 768-6601
19.	San Pedro	Mr Curtis Gopiechandsingh 365-1344/687-1471	Ms Hyacinth Gillard San Pedro Road Poole 756-1203
20.	Guayaguayare	Ms Francisca Jacob Guayaguayare 630-4607/743-3345	Ms Hermylene Baptiste Guayaguayare Village 782-8621/630-3174
21.	Mafeking	Mr. Clifford Campbell Mafeking Village Mayaro 484-9365	Ms Angela Myler Mafeking Village 790-0997
22.	Radix	Ms Margot Joseph Radix Village Mayaro 323-4893	Mr Marlon Sylvan 9 Manzanilla Road Mayaro 748-5550

MINISTRY OF COMMUNITY DEVELOPMENT, CULTURE AND GENDER AFFAIRS
COMMUNITY DEVELOPMENT DIVISION
COUNTY – NARIVA/MAYARO

ELECTION RETURN – WOMEN’S GROUP

No.	Name of Women’s Group	Name/Address & Telephone Contact President	Name/Address & Telephone Contact Secretary
23.	Boos	Bisoondai Herman Grant Street Rio Claro 644-2410/773-6721	Bernadine Felix Boos Village Rio Claro 738-6741/354-7894
24.	Guayaguayare	Muriel Hagley Ferrier Circular Guayaguayare 630-3231	Annie Grant Newlands Guayaguayare 630-3368
25.	Rio Claro	Lornicia Ramdass Enid Village Rio Claro 644-2785	Carol Lee Brown Naparima Mayaro Road Rio Claro
	Fonrose	Marlene Mathura	Geeta Humphrey

26.		Naparima Mayaro Road Poole 352-1878	Fonrose Village Poole 754-3599
27.	Navet	Rosalie Maharaj Tabaquite Road Rio Claro 644-1766	Cintra Ramlochan 882 Cushe Village 644-1589
28.	Biche	Hazel Wallace 9 Charles Street Biche 668-9206/490-5966	Jenah Lopez Hicks Street Biche
29.	Cushe	Gracie Bedassie Cushe Village 313-8826	Theckna Mark Cushe Village 703-4321
No.	Name of Women's Group	Name/Address & Telephone Contact President	Name/Address & Telephone Contact Secretary
30.	Brother's Road	Jennifer Mc Leod 35 Church Street 6 th Company 480-4064	Pamela Mitchell 16 Sealey Trace Brother's Road 372-9323
31.	Poole/Lazzari	Agatha Louthan 63 Lazzari Road Poole 749-4724	Cintra Harribans 76 Lazzari Road Poole 780-9995

MINISTRY OF COMMUNITY DEVELOPMENT, CULTURE AND GENDER AFFAIRS
COMMUNITY DEVELOPMENT DIVISION
COUNTY – NARIVA/MAYARO
OTHER GROUPS

No	Name of Other Group	Name/Address & Telephone Contact President	Name/Address & Telephone Contact Secretary
1.	Rio Claro Unemployment Association	Louis Castello Shell Housing Scheme Rio Claro 762-4077	Clynette Roberts Enid Village Rio Claro 723-5480
2.	Kernaham Improvement Committee	Dhanaraj Lobin #176 Kernaham Trace Mayaro 746-1857	Judy Perrote LP# 7 Peter Hill Road Mayaro 785-1669
3.	Trimmer Sport and Cultural Organisation	Mathew Garcia Cushe Village 644-1621	Richard Rivers # 4 Tabaquite Road 644-2334
4.	Riverside Sports & Cultural Group	Yeakaish Sudama Riverside Road Fonrose Village 644-6158	Homad Sudama Riverside Road Fonrose Village 644-6178
5.	Khandan Street & Environs Committee	Heeralal Gopaul #2398 Naparima Mayaro Road Rio Claro	Basmat Roopnarine #16 Khandan Street Rio Claro
6.	Guayaguayare Health Care Group	Annie Grant Newlands Village Guayaguayare 630-3368	Carol Murray Petrotrin Guayaguayare
7.	Community Promotions	Mr. Clive McKnight Guava Patch Road Boos Village 644-2335/758-1011	Shurland Bengochea 644-3459

8.	Mayaro Folk Performers	Jennette Primus Gordon #11 Peter Hill Road Mayaro 778-3727	Mary Lewis Ferrier Circular Road Newlands, Guayaguayare 630-3005
9.	Achievers Sports & Cultural Club	Ricky Samaroo 44 Poole Valey Trace Rio Claro 644-2663	Cintra Boodoo Samaroo 46 Poole Valley Trace Rio Claro 644-2656
No	Name of Other Group	Name/Address & Telephone Contact President	Name/Address & Telephone Contact Secretary
10.	Cushe Sports Club	Aldrick Camejo Cushe Village 644-1621	Torry Cosier Cushe Village 644-1705
11.	Mayaro/Guayaguayare Unemployed & Concerned Citizens (Radix Branch)	Lamont Cornwall St. Ann's Road Mayaro	Roberta Mc Leen St. Ann's Road Mayaro
12.	Rio United Sports Club	Sharlene Elliott 644-0086	Annette Byneal
13.	Killdeer Ramayan & Chowtal Group	Phulchan Bagaloo #101 Grant Street Rio Claro 644-3823	Deneash Ramsawak Killdeer Trace Tabaquite Road
14.	Rio Claro Cricket Coaching School	Mr. Ernest Bridgelal Agostini Village, Rio Claro 644-3267/682-5396	Fazia Sirju Mohammed Tabaquite Road, Rio Claro
15.	Rio Claro Koskeros Steel Orchestra	Kenny Pascal 644-1146	Kelvin Pascal Old Mayaro Road, Liberville
16.	Mayaro/Guayaguayare	Gregory Galera	Sharon Watson

	Unemployed Organisation & Concerned Citizens (Guayaguayare Branch)	Guayaguayare Village Guayaguayare	Guayaguayare Village Guayaguayare
17.	Mayaro Life	Mr Kacy Wight 67 Karamath Street El Dorado 748-7051	Ms Candice Henry # 3 Carrick Street Arima 667-4466
18.	Mafeking Riverside Development Authority	Mr Brian Francis Mafeking Village Mayaro 771-1914/630-7335	Ms Tricia Adams Mafeking Village Mayaro
19.	Rio Claro Learning & Development Centre for Special Children	Mr. Keith Rodriguez Fuentes Street Rio Claro 644-1072	Ms Kelly-Ann Langdon-Pascall 2580 A Naparima Mayaro Road Rio Claro 353-7172
No	Name of Other Group	Name/Address & Telephone Contact President	Name/Address & Telephone Contact Secretary
20.	Biche Community Workers	Mr. Selwyn Yee Shong 2 Settlement Road Plum Mitan 789-2901/344-6603	Mr. Marsha Baboolal 2 Sambrano Street Biche 716-3077
21.	Riverside Road Mandir	Mr Khemchand Sudama Riverside Road 644-6150	Mr Dave Sudama Riverside Road 475-3052
22.	Radical Leaders	Mr Rajesh Mootoor Kowlessar Trace, Biche 668-9040/725-1703	Ms Vashti Mootoor Canque Village, Biche 668-9511
23.	Women In Fishing Association	Ms Bernadette Fonrose Guayaguayare 630-3014	Ms Indrawatee Beharry Lewis & Sucre Street Mayaro 630-6314/743-8973
24.	Nariva Unemployment Organisation and Concerned Citizens	Mr Richard Rivers Dades Extension 741-6213	Ms Clemencia Joseph Rivers Dades Extension 729-6925

25.	Cushe Youth Sports & Cultural Council	Ms Sharon Mathew-Ali 1001 Cushe Village Rio Claro 644-1616/791-6056	Ms Hazelann Matthews 1001 Cushe Village Rio Claro 644-1616/644-0934
26.	T & T Chapter of Disabled People International, South-Eastern Region	Ms Sumatee Persad Rio Claro	Mr Suresh Oudai Naparima Mayaro Road 644-3112
27.	Networks for the Socio-Economic Empowerment of Guaymay	Ms Anne Marie Elie Pierre-Ville Mayaro 630-3108	Eutrice Gracia Plata Lewis & Sucre Street Mayaro 788-4131
28.	La Brea Youths, Sports & Cultural Group	Mr Jaisaree Ragoobar La Brea Village 630-4101	Ms Camille Charles La Brea Village 758-8665/747-1059
29.	Killdeer Village & Environs Unemployment Group	Mr. Keiysha Geoffrey 16 Killdeer Trace 644-3770	Mr Kareesha Ghany Roopnarine 15 Killdeer Trace 644-3795/732-3687
No	Name of Other Group	Name/Address & Telephone Contact President	Name/Address & Telephone Contact Secretary
30.	Sons & Daughters of Zion Spiritual Shrine	Minister Juanita G Williams 2089 Naparima Mayaro Rd, Rio Claro 644-3956	Mother Junita N McKenzie Gorge Ponderosa Estate, Libertville 644-2957
31.	Rural Women for Development	Ms Deanne Francois Grant Street, Rio Claro 644-0565	Ms Michelle Mohammed Ecclesville Road, Rio Claro 720-3204
32.	Brother's Road Empowerment Group	Ms Josephine Mitchell 16 A Sealy Trace, Brother's Road 656-2233	Ms Paula Rahim 795 Torrib Tabaquite Road
33.	REACT Nariva/Mayaro County Team 6009	Mr Balchan Khaloo 2 Khaloosingh Avenue, Rio	Mr Franklyn Maraj Union Village, Rio Claro

		Claro 644-2795	644-0647
34.	New La Divina Pastora Spiritual Baptist Church	Rev Milton Steele Palm Green Drive, Rio Claro 644-3584	Mr Clive Mc Donald Guayaguayare Road Rio Claro 644-0395
35.	Navet Unemployment Organisation for Concerned Citizens	Ms Jemma C Harricharan 704 Navet Village 730-0377	Ms Marlene Mohammed 12 2 nd St Charuma, Navet Village 644-0412
36.	Charuma Unemployment Organization	Mr Kelvin Beharry Charuma Village 668-9516/349-4266	Ms Sandy Ramnanan Charuma Village 337-3590
37.	Mayaro Homework Centre Empowering Primary Schools [MHCEPS]	Ms Sherry Ann Bayne Chaitan Avenue Mayaro 630-1131	Ms Leslie Ann Kem Peter Hill Extension Trace Mayaro
38.	St Theresa Social Justice Team	Ms Yolande Rampersad Elie Street Rio Claro 644-2472	Ms Margaret Lazzar Cushe Village Rio Claro 644-1861
39.	The Kernaham Food Crop Farmers Association	Mr Rajaram Harripersad 754-9102	Mr Krishendath Nandlal 256 Kernaham Trace Mayaro 374-2310
No	Name of Other Group	Name/Address & Telephone Contact President	Name/Address & Telephone Contact Secretary
40.	Diabetes Association of Trinidad & Tobago Nariva/Mayaro Branch	Salihar Dindial #12 Rio Claro Mayaro Road Rio Claro 644-3485/776-1918	Glenna Sooknanan Ponderosa Estate, Rio Claro 644-2325
41.	Ecclesville Unemployment	Paul Guerra # 5 Samaroo Street	Richard Guerra # 7 Samaroo Street

	Association	Ecclesville 398-9481/644-1139	Ecclesville
42.	Spiritual Shouter Baptist Incorporation	Mother Phyllis Dickson Absolam Trace Rio Claro 343-9690/487-0836/747-9110	Virginia John Guayaguayare Road Rio Claro
43.	Biche Better Youth Movement	Kesha Walcott # 4 George Street Biche 3465-9552/736-5141	O' Neil Walcott Prince Street Biche 345-3013/683-9581
44.	Union Community Group	Ralph Wilson # 38 Oilfield Road Union 644-3417	Nyla Sampson Union Village Rio Claro 363-5816/396-0790
45.	Rio Claro Action Community and Cultural Organization	Paul D Montique Dades Road Rio Claro 383-0734/644-3953	Whalid Azan Ali Liberville Rio Claro 644-2222
46.	Jeffers Crossing Farmers Group	Brian Lemaitre Jeffers Crossing Tabaquite Road 723-0891	Raves Gopaul Baciram Trace Jeffers Crossing 763-3392
47.	Biche Young Developers	Mr Kendell Duncan Charles Street Biche 359-6989	Ms Marisa Gooding Newlands Village Biche 304-5356
48.	Railway Road Action Committee	Mr Toolaram Ramlal Old Railway Road Rio Claro	Ms Lystra Singh 842 Tabaquite Road Rio Claro 644-3654
49.	United Bakers	Ms Curlene Francois Guayaguayare Village 306-4281	Ms Sharmila Sampson Guayaguayare Village 307-7169
No	Name of Other Group	Name/Address & Telephone Contact President	Name/Address & Telephone Contact Secretary

50.	Mayaro Fisher Crew	Ms Vianmey Honora Lewis & Sucre Street Mayaro 478-8479/630-9896	Ms Christa Edwards Lewis & Sucre Street Mayaro 630-6364
51.	Fonrose Love Connection	Ms Angela John Humphrey Naparima Mayaro Road 392-3043	Ms Geeta Humphrey Fonrose Village 482-7741
52.	Housing Scheme Action Group	Mr Authur Mc Knight Housing Scheme Guayaguayare 363-1033	Ms Sharon Neptune Housing Scheme Guayaguayare
53.	Navet Shiva Hindu Mandir	Mr Heralal Sinanan Navet Village 791-6092	Mr Chandradath Seeraj 474 Navet Village 755-1826
54.	Brother's Road New Testament Church of God	Mr Ramjas Mahabir Fonrose Village 762-7704	Ms Grace Rampartap Brother's Road 747-0162
55.	Riverside Road Mandir Youth Group	Mr Avian Sudama 111 Riverside Road 388-1467/479-3929	Mr Yeakaish Sudama Riverside Road 321-5298

MINISTRY OF COMMUNITY DEVELOPMENT, CULTURE AND GENDER AFFAIRS
COMMUNITY DEVELOPMENT DIVISION
COUNTY – NARIVA/MAYARO

SECONDARY ORGANISATIONS

No.	Name of Secondary Organization	Name/Address & Telephone Contact President	Name/Address & Telephone Contact Secretary
1.	Nariva/Mayaro Branch of Village & Community Councils	Mr Amoroso Santana Pascall Trace Brother's Road 367-0820/741-4231	Ms Zola Smith New Lands La Savanne 303-4492
2.	Nariva/Mayaro Federation of Women's Institute	Ms Elitha Bessor Mafeking Village 746-2906	Ms. Hazel Wallace 9 Charles Street Biche 668-9206/490-5966

[illegible]